

G31-LC400E2 C4 Pro带撑杆英文版说明书 更新日期: 20230904



Contents

- Safety Cautions 1
- Parts and Panel Instruction 2
- Device Connectivity 3
- Quick Guide 4
- Turn ON/OFF 5
- Remote Operation and Pairing Instruction 6
- Focus Adjust 7
- Home Interface Instruction 8
- Bluetooth Connection 9
- Apps Download and Install 9
- Bluetooth Connection 10
- File Browser 10
- Screen Mirroring 11
- Quick Settings 11
- Auto Focus 11
- Auto Keystone (Horizontal & Vertical) 11
- Auto Rotate Assistance 11
- Auto Rotation Correction 12
- Auto Position 12
- Silent Mode 13
- Virtual Mouse 14
- Bluetooth Speaker Mode 14
- General Settings 14
- Image Setting 14
- Sound Setting 15
- Source Input 15
- Projection Mode 15
- Keystone Setting (Horizontal & Vertical) 15
- Rotate Correction 16
- Screen Zoom 16
- Off-Axis Setting (Horizontal & Vertical) 17
- Four Point Keystone 17
- Custom Calibration 17
- Language Setting 18
- Screen Saver 18
- Factory Restore 18
- Basic Specification 19
- Projection Distance 19
- Cleaning Method 20
- Warranty Card 21

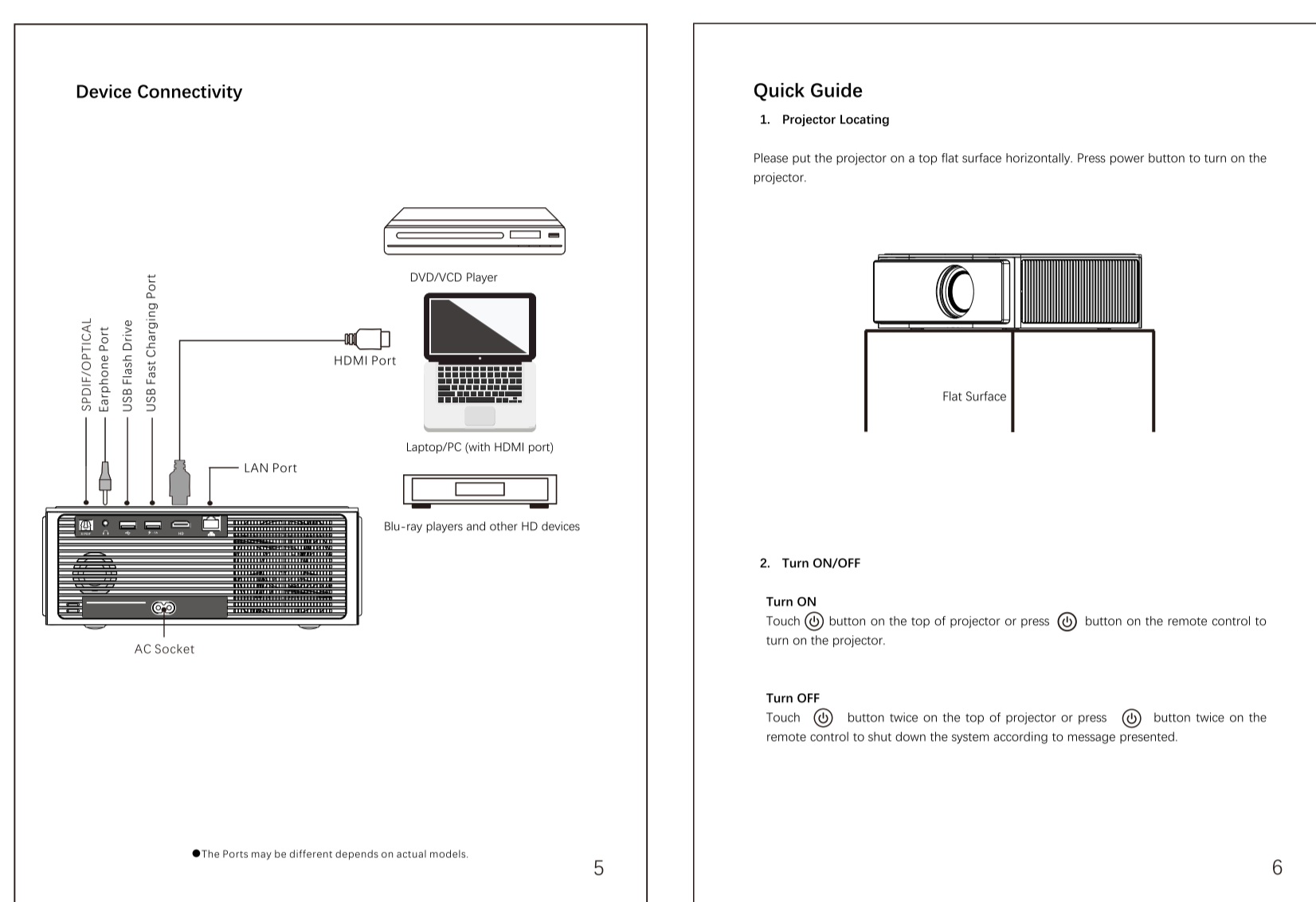
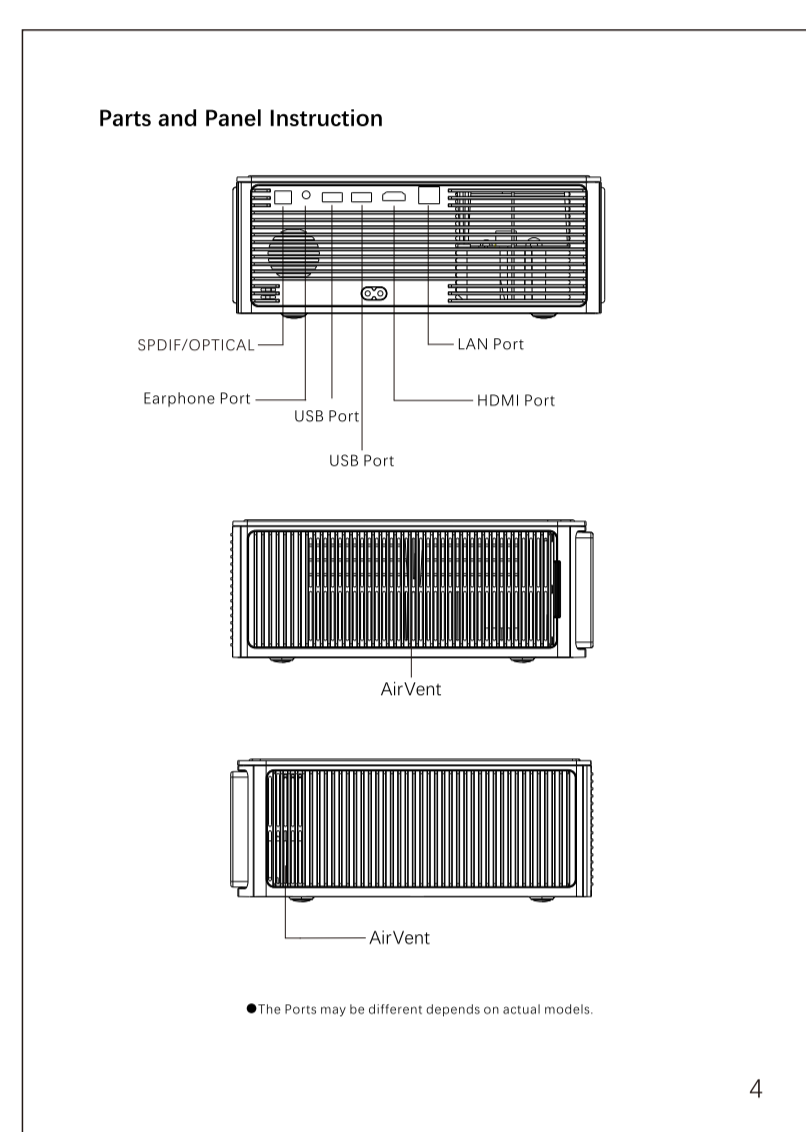
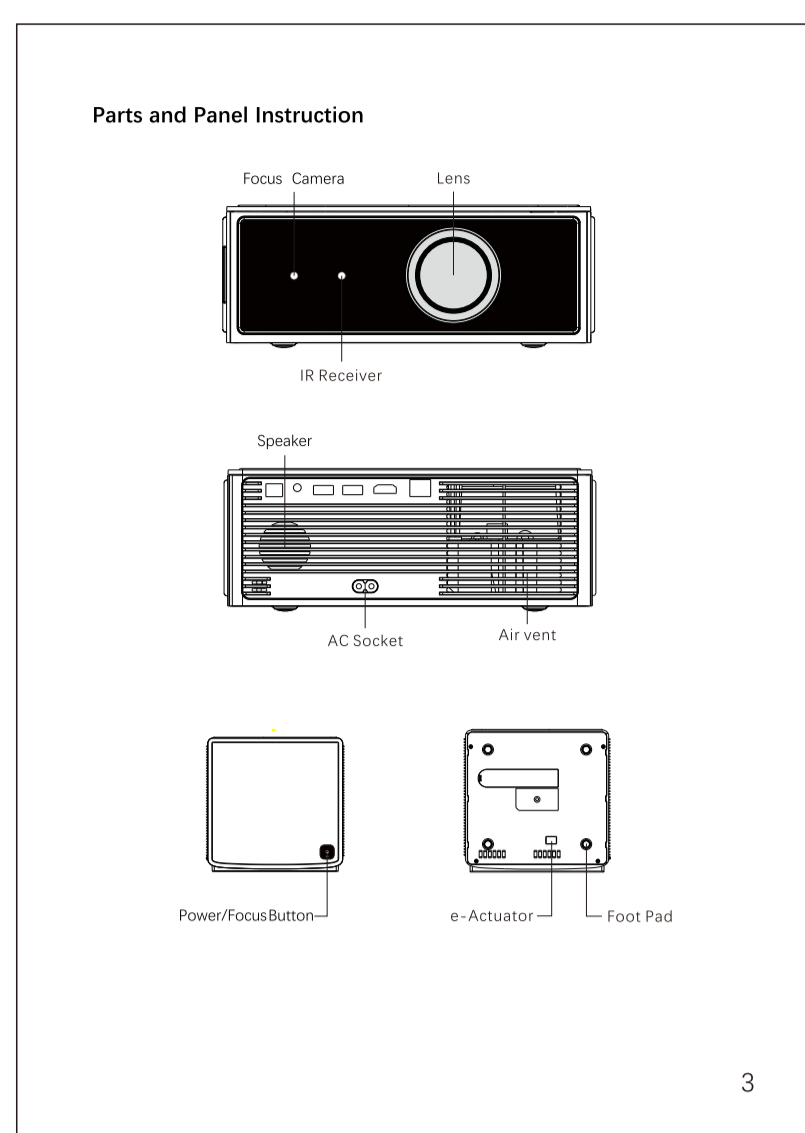
Safety Cautions

Please read the user manual of our projector. Please read through this user manual and keep it properly after reading for future reference.

- Do not put the projector in the place where the warm air flows from the air conditioners directly. Condensation of water or high temperature may lead to product damage.
- Please ensure to gather things around the projector and the lens is not blocked to avoid overheating.
- Please prevent storage objects such as walls or paper screens from falling into the projector. Don't insert any metal objects such as iron wires or screwdrivers into the projector. If any storage object falls into, please turn off the power immediately and wait professional instruction to take it out.
- Put the projector far away from the heat to avoid damage by heat leakage.
- Please use soft packing material to protect the projector if any long-distance transport needed in the meanwhile, prevent from violent collision and shaking. Use action sheet with 70% moisture alcohol to wipe the lens. Any stars or larger spots on it.
- Do not look into the lens directly after the projector is turned on, the strong light might hurt your eyes.
- Do not touch the front vent after a long time running, the vent may be heated and might burn your eyes.

Caution
Please do not open the projector and contact repair by yourself! If there is anything wrong, please contact with authorized customer service center for help.

Caution
Please do not locate the projector into the sun or heavy moist to avoid fire or electric leakage.



3. Remote Operation and Pairing

Remote Operation

- Indicator
- Power Button
- Input/Output
- Select Button
- Enter/Select
- Home/Back/Forcing/Power
- Up/Down
- Multi
- Menu/Settings/Panel
- Bluetooth Pairing
- Return
- Focus/Adjust

Remote Control Pairing
Press the [Pair] button on the remote control or enter into settings and select Remote IR. According to pairing method, the steps are listed and light indicator on the same way will indicate until following light starts to flash. It will start to process pairing automatically.

4. Focus Adjust

5. Home Interface Instruction

6. Wi-Fi Connection

Go to Settings interface to select check of Wi-Fi connection setting area. Or go to pairing menu by pressing setting button on remote control when projector is powered on to show the menu and connect to your Wi-Fi.

7. Apps Download and Installation

Press to search interface and load the app name or find the right app to download and install.

Or go to Google Play store in the APPS interface and sign in your google account. Then click the app to download and install.

8. Bluetooth Connection

Go to Remote IR Accessories in the setting, select Add accessory to search for Bluetooth accessories. Press the pairing button on the remote control to connect to the projector.

9. File Browser

Go to File Browser in the setting, select File Browser or select USB memory device to connect and click on the download button to download the file.

Auto-Obstacle Avoidance

Go to Quick Settings in the setting, select Auto-Obstacle Avoidance to enable auto-avoidance feature to avoid obstacles located in projection area automatically in order to keep the audience can always watch complete images.

Auto-Rotation Correction

Go to Quick Settings in the setting, select Auto-Rotation Correction to enable in default. In this case, the projector will go to the right position when you hold the projector body for a few seconds, then it will project the image on the wall or screen in right shape and position you want.

Auto-Position

Go to Quick Settings in the setting, select Auto-Position feature is enabled in default. In this case, the projector will go to the right position when you hold the projector body for a few seconds, then it will project the image on the wall or screen in right shape and position you want!

Silent Mode

Go to Quick Settings in the setting, select Silent Mode to enable silent mode for more quiet system setting while watching TV apps.

Virtual Mouse

Go to Quick Settings in the setting, select Virtual Mouse to enable the remote control as mouse in order to watch some point of view apps for full operation.

Bluetooth Speaker Mode

Go to Quick Settings in the setting, select Bluetooth Speaker and choose OK to enter into Bluetooth Speaker mode when there is a pairing line appear. Then find the projector Bluetooth name on your phone and tap to pair to use the projector as a Bluetooth speaker. When the projector starts Bluetooth speaker mode, projects will auto connect.

General Settings

Image Setting

Go to Projector Setting in the setting, select Image to adjust brightness, contrast, saturation and color temperature.

Sound Setting

Go to Projector Setting in the setting, select Sound to adjust audio balance, bass, treble, surround and enable surround sound effect.

Source Input

Select mode in the setting area. Rotation on the remote then select HDMI as a signal source mode area. OK action on the remote control to search source from HDMI. And you can enable and disable Consumer Electronics Control feature such as HDMI-CEC/CEC/ARC/CEC/Device Auto power off. Or tap power on Menu control for a better using experience when you use HDMI devices connected.

Projection mode

Go to Projector Setting in the setting, choose Projection Mode to select the right mode for the projector according to actual projection requirement.

Off-Axis Setting

Go to Quick Settings in the setting, choose Projector Setting, turn off auto focus, then you can see Remote Off-Axis and Horizontal/Off-Axis feature to adjust screen position on vertical or horizontal direction.

Four Point Keystone

Go to Quick Settings in the setting, choose Projector Setting, turn off auto focus, then you can see Four Point Keystone to adjust keystone manually.

Custom Calibration

Go to Quick Settings in the setting, choose Projector Setting, turn off auto focus, then you can see Custom Calibration to adjust the image property if image distortion or shape abnormal happens. Follow the instructions on the screen to operate in during the calibration.

Language Setting

Go to System Preferences in the setting, select the language you want by pressing up and down buttons. Then press OK button to confirm.

Screen Saver

System Preferences in the setting, select Screen Saver then you can change the screen saver and enable to turn it on.

Factory Restore

Go to System Preferences in the setting, select Screen Saver by pressing OK button to start factory restore. This operation will erase all data from the device's internal storage like people account, system and app data, settings and downloadable apps.

Basic Specifications/Parts

Product name	G31 C4 Pro	Display Technology	LED
Light Source	LED x3 (Blue, Green, Red)	Screen Size (max. diagonal)	110 inches (2800mm)
Operating Method	Remote/Infrared Control	Screen Size (min. diagonal)	32 inches (813mm)
Operating Mode	Screen/Projection	Screen Resolution	1920x1080 (Full HD)
Max Weight	7.5kg	Connector	2xHDMI/2xDisplayPort
Power Consumption	120W (max. power)		

Projection Distance

Screen Size	Screen Size (mm)	Distance
32"	(813mm)	1.11
50"	(1270mm)	1.60
60"	(1524mm)	1.92
70"	(1778mm)	2.31
80"	(2032mm)	2.70
100"	(2540mm)	3.39
110"	(2794mm)	4.11

* The projection size and distance here show the actual distance between the projector and the screen. The actual size may be different in actual use in an environment.

Cleaning Method

How to Clean
Please disconnect the power adapter before clean.
Please don't use chemicals or other volatile chemicals on projector or its lens.
Please don't let children or other people contact the products for a long time. The coating will be damaged or peeled off.

Clean Projector
Please use soft and dry cotton cloth. If it is a very dirty place wipe with a soft cloth dampened with diluted neutral detergent and use dry cloth to make it dry. If you use chemical fiber cloth, please be careful.
To avoid damage or losing pixels of, please don't use thinner, benzene or other solvents. Do not scratch the projector with nail or other hard objects to avoid scratching.

Clean Lens
Please use the professional cleaning kit (such as air blower, lens cleaning tissue etc.) to clean the lens. Or it may cause scratches.

Clean Ventilation Holes
Top heavy dust will cause the projector overheating. Please clean ventilation holes at least every 1,000 hours use.

Turn off the projector
Please disconnect the power adapter/insert break into a new secure channel type for the clean inside of projector.

Avoid direct view of vacuum cleaners without connectors, or use brushes for cleaning.

WARRANTY CERTIFICATE

EGATE

Manufacturer warrants this product to be free from defects in materials and workmanship for a period of 1 year from the date of purchase. This warranty is subject to proper use and handling of the product. The manufacturer will not be liable for any special, incidental or consequential damages in any way resulting from the use of the product. This is a limited warranty. For more details, please refer to the user manual.

For Support: call at 706-837-9993 / 7 or mail at support@egin.com

Model: _____
S. No.: _____
P. No.: _____
Date: _____

Scan to Register
This Certificate is valid only after mandatory purchase registration within 15 days of purchase.

For Support: call at 706-837-9993 / 7 or mail at support@egin.com

Mail: support@egin.com | Call: 0 706517 9993 / 4 / 5
Ship To: Service Centre,
504, 5G Alpha Tower II, Sec-9, Vasantpur, Ghazipur, UP 201010,
I. N. E. C. Any other e-gate agents will be empowered by the purchase of this product only.